

Don Quichote de la Mancha

Rob Goorhuis

Allegretto (Don Quichote)

f

mf

mf

mf

f

mp cresc.

f

mf

mp

f

f

dim.

Ritard.

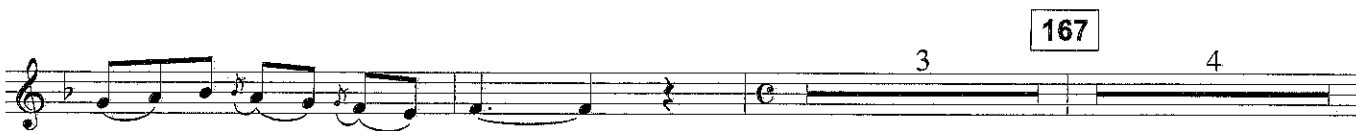
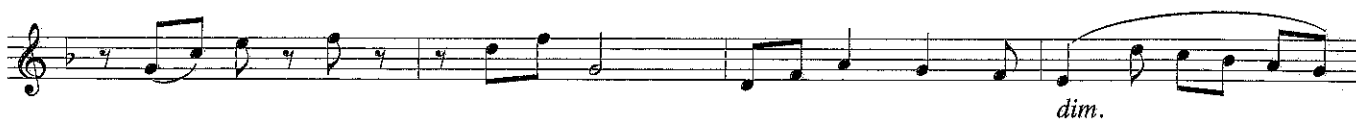
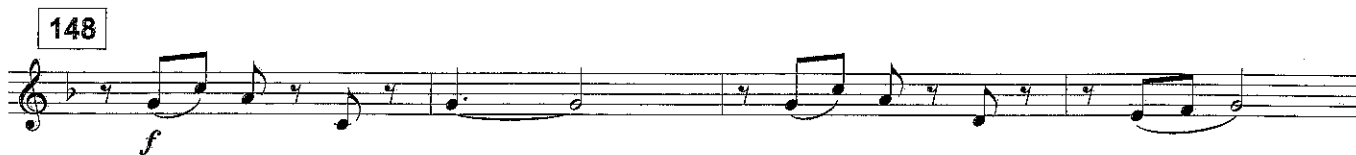
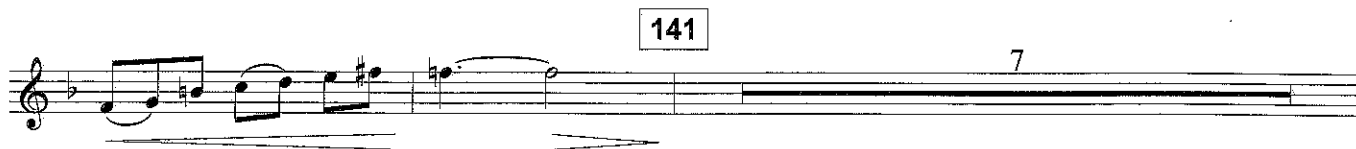
A tempo

Romance (Dulcinea)

Musical score for Romance (Dulcinea) in 3/4 time. The score consists of ten staves of music. The first staff begins with a treble clef and a key signature of one sharp (F#). The music is marked *p* (piano). The second staff has a measure number 77 in a box. The third staff has a measure number 85 in a box. The fourth staff has a measure number 93 in a box. The fifth staff has a measure number 99 in a box. The sixth staff has a measure number 107 in a box. The seventh staff has a measure number 115 in a box. The eighth staff has a measure number 128 in a box. The music includes various dynamics such as *p*, *mp*, *mf*, *cresc.*, *dim.*, and *ten.* (tension). There are also slurs and a 4-measure rest indicated.

Vivente (Sancho Panza)

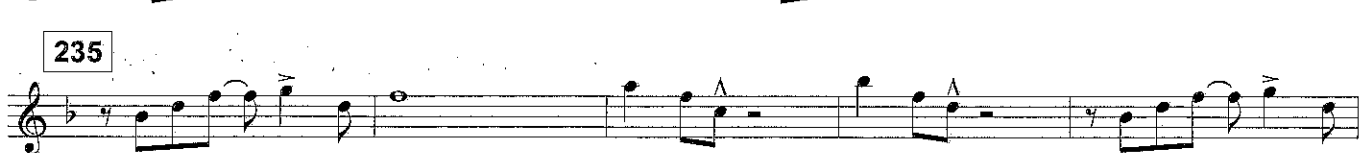
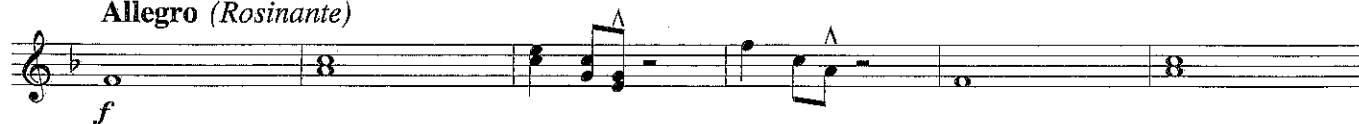
Musical score for Vivente (Sancho Panza) in 3/4 time. The score consists of two staves of music. The first staff begins with a treble clef and a key signature of one flat (Bb). The music is marked *f* (forte). The second staff has a measure number 128 in a box. The music includes various dynamics such as *f* and *mf*. There are slurs and a 4-measure rest indicated.



♩ = ♩ *Accelerando poco a poco*



Allegro (Rosinante)



Poco maestoso

